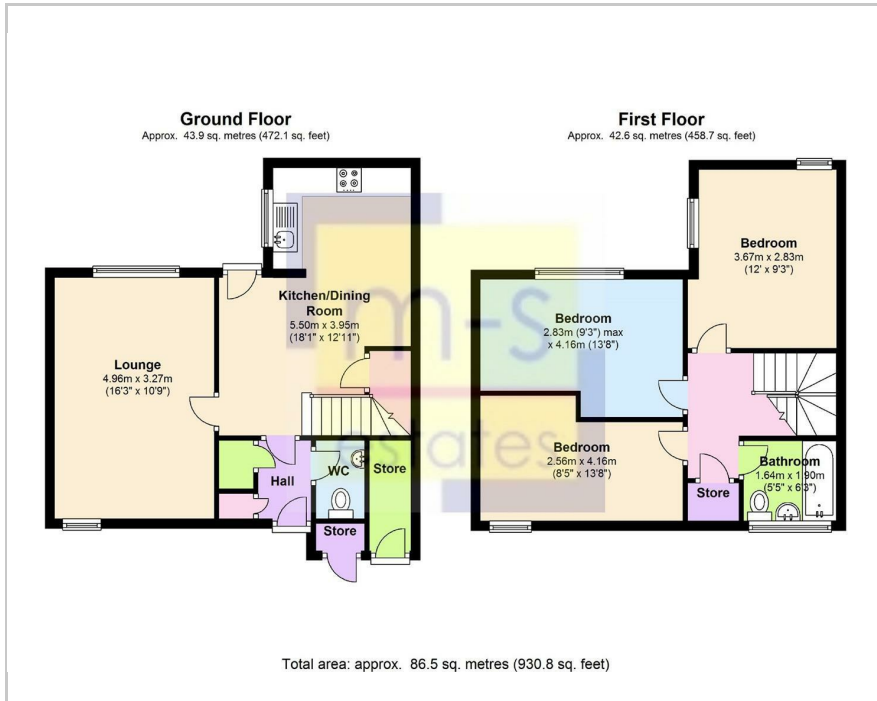




19 Park Road, Nottingham, NG7 1LB
£321 Per Week

Floor Plan



- STUDENT ACCOMMODATION
- 3 Large double bedrooms
- Open-plan kitchen & dining area
- Spacious Living room
- Bathroom & additional WC
- Spacious property
- Very close to local amenities
- Easy access to UON and QMC
- Located off Park Road
- Option for bills included for an additional £25pppw



Area Map



Energy Efficiency Rating

	Current	Potential
<i>Very energy efficient - lower running costs</i>		
(92 plus) A		
(81-91) B		
(69-80) C		
(55-68) D		65
(39-54) E		
(21-38) F		
(1-20) G		
<i>Not energy efficient - higher running costs</i>		
England & Wales	EU Directive 2002/91/EC	

These particulars, whilst believed to be accurate are set out as a general outline only for guidance and do not constitute any part of an offer or contract. Intending purchasers should not rely on them as statements of representation of fact, but must satisfy themselves by inspection or otherwise as to their accuracy. No person in this firm's employment has the authority to make or give any representation or warranty in respect of the property.

3 Park Street, Derby Road, Lenton, Nottingham, NG7 1RR

Tel: 0115 9120061 Email: mail@ms-estates.co.uk www.ms-estates.co.uk